

# LOCAL AND REGIONAL COMPETITIVENESS PROJECT

## ENVIRONMENTAL & SOCIAL MANAGEMENT PLAN CHECKLIST

Sub Project:

„WINE, API AND ECO TOURISM IN NEGOTINO AND  
SURROUNDINGS“

DECEMBER 2018  
Municipality Negotino

## A) INTRODUCTION

Local and Regional Competitiveness Project (LRCP) is a four-year investment operation, supported by European Union using funds from IPA II earmarked to competitiveness and innovation in Macedonia. LRCP will be managed as a Hybrid Trust Fund and consist of four components, executed by the World Bank and the Government of Macedonia. The Project will provide investment funding and capacity building to support sector growth, investment in destinations and specific destination prosperity. At the regional and local levels, the Project will support selected tourism destinations in the country through a combination of technical assistance to improve destination management, infrastructure investment and investments in linkages and innovation. The investments will be undertaken through a grant scheme for the regional tourism stakeholders such as municipalities, institutions, NGOs and private sector. This Environmental and Social Management Plan (ESMP) Checklist has been prepared for activities carried out under the "WINE, API and ECO TOURISM IN NEGOTINO AND SURROUNDINGS" Project. The ESMP Checklist presents the project description, technical details, scope, setting and location based on which it assesses environmental and social risks. Implementation of mitigation measures addressing the identified risks and issues as well as monitoring plan defined in the ESMP Checklist is mandatory as is compliance with the national environmental and other regulation, Environmental and Social Management Framework prepared for the umbrella LRCP project as well as WB operational policies.

### 1. Short description of the subproject

The main purpose of the subproject "WINE, API AND ECO TOURISM IN NEGOTINO AND SURROUNDINGS" is to support Municipality of Negotino in intention to realize set of activities in Negotino and surroundings with goal-development of tourism in Municipality of Negotino.

The overall objective of this subproject is Negotino to become desirable destination that truly fits the tourist needs, based on sustainable destination management principles, where the tourism will have high contribution to local economic development and new job opening, a destination which tourists knew that exist, make successful reservations, have good experience and are ready to make reservation again or to recommend the destination to other.

Project "WINE, API AND ECO TOURISM IN NEGOTINO AND SURROUNDINGS" includes following activities:

### 1. Parterre-Ground arrangement of trails in an existing bee park in the village of Veshje

**- Additional enrichment of the area of the existing bee park with trails (existing tourist location)** in order to offer activities and experiences in rural environment allowing activities such as nature-hiking in and outside the bee park, enabling tasting of a local product - familiarization with beekeeping and working tools as well as process of beekeeping and honey production and possibility of organization of trainings, visits to close vineyards, tasting of local agricultural products. In frames of the existing bee park, tables and benches for picnics and lunches in nature, rest and relaxation are set. Existing benches, boards and summer construction – gazebo will remain in the existing bee park. Additional value of the

location of the village Veshe and closeness with village Disan, where wine cellar "Venec" with a great tradition is located, completely renovated with restaurant capacity and future possible accommodation facilities with own vineyards offering vineyard walking tour or cycling and familiarisation with local culture, local population and tradition.

The arrangement of the trails is with total length of 200 meters.

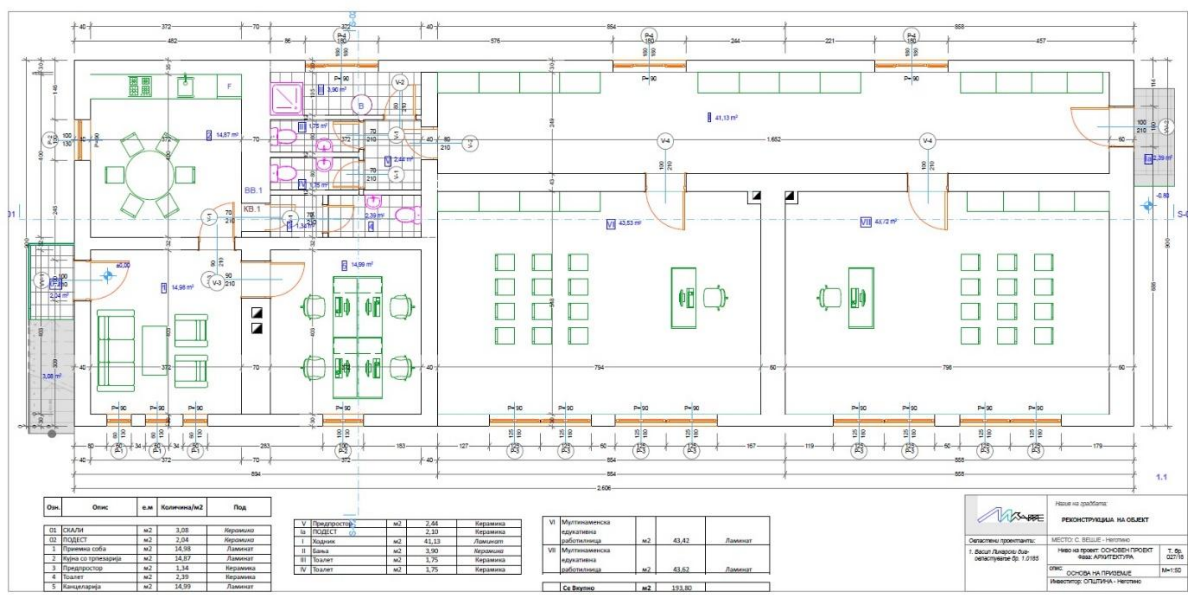
The total surface for paving with tiles is 660 m<sup>2</sup>.

## **2.Reconstruction and adaptation of existing old school building in Modern API Center within the existing bee park.**

Immediately at the entrance of the village of Vesje an existing bee park (with summer constructions with tables and benches, sales stands, info boards and enclosed space with placed boxes for breeding bees) is located, an old school building will be reconstructed and adapted to Modern Api Center. Completion of the existing bee park with the incorporation of the new content of the parterre- ground trails (activity 1), would complete the concept of a bee park with adaptation of the old school building in the Modern Api Center, which would enable additional contents - education for the beekeeping process in an adapted classroom, familiarization with tools and equipment, production and products in an authentic way to match modern expectations during visit of such tourist attractions. In order to further increase the number of visitors in this region and also to increase the number of activities of the members of the API center, there is a need to reconstruct the old school building, which implies reconstruction of the damaged parts, adaptation and conversion of the existing premises. For that purpose following activities are planned:

- Removal of damaged parts of the school building reconstruction of roof, floor, replacement of carpentry, windows doors etc. in order to have a condition for the reuse of the building. It is planned to completely remove on existing roof construction, ceramics, tiles, floor, doors and windows.
- Adaptation of the premises- classrooms in an educational center for the needs of the API Center with the creation of a multifunctional space used as an educational workshop or other activities that the API Center foresees. For adaptation of old school to API Center, setting of equipment such as kitchen with dining area (dining table), reception room with table chairs and closets, office with office equipment, and two large rooms will be adapted for multinational educational workshops with chairs, bureaus, closets, a hallway and three toilets with a one shower. is envisaged. In the basement area there three small rooms.

The school building is a ground-floor facility (193,80 m<sup>2</sup>) with basements (46,29 m<sup>2</sup>).



*Picture.1.API Center S. Veshje*

### 3.Arrangement of Jardinières on Boulevard and Street Marshal Tito(Section 1 and 2)

With this activity, it is planned to arrange existing plants, horticulture and small scale drip irrigation, as follows: At the eastern entrance of Negotino city 600 meters in length and western entrance to Negotino city with a length of 400 meters. For the two sections, a detail design has been prepared, where the following activities foreseen:

**A.Primary works**– Marking and insuring the route

#### **B Land works**

##### *Section 1 East exit of town Negotino*

Machine excavation (95%) and manual earth excavation (5%) m<sup>3</sup> 176

Manual excavation mixed with compacted buffer along the curb on the pavement m<sup>3</sup> 9.8.

Purchase and laying down - of clean land m<sup>3</sup> 63,7

Purchase and laying down of a crushed stone along the concrete curb m<sup>3</sup> 4.9

##### *Section 2 West entrance of town Negotino*

Machine excavation (95%) and manual earth excavation (5%) m<sup>3</sup> 400,5

Manual excavation mixed with compacted buffer along the curb on the pavement m<sup>3</sup> 22,4

Purchase and laying down clean land m<sup>3</sup> 645,6

Purchase and laying down of a buffer along the concrete curb m<sup>3</sup> 11,2

#### **C Facilities and equipment**

-Backing of foundations for Jardinières walls

-Shouldering and concreting of reinforced Jardinières concrete walls constructed from 3 rows of concrete bricks with height 20cm, width 19cm and length of 40cm in the middle belt of the boulevard (in total 60cm in height) and 2 rows of concrete bricks with height 20cm, width 19cm and length of 40cm on the side/s of the boulevard and street (in total 40cm in height)with double sided boarding

- Purchase and installation of new curbs,paver plates, concrete walls with paving slabs, and paver tiles on the top of the Jardinières concrete walls

-Settingarmature net in the Jardinière walls,

- Purchase and installation of waste baskets and benches

#### D Greening and horticulture

- Purchase and layingof humus andpark grass

#### F Irrigation and foliage

- Making and installing a drip surface line system

- Installationof manhole shafts 2,5 / 1,5 / 1,5m together with excavation with plate and protective cap-type site marked in the project for setting a sand filter for irrigation of the greenery. In Section 1 one shaft and in Section 2 one shaft.

On pictures below, existing condition of location where jardinières are envisaged as well as models/types of jardinières are shown.



*Picture 2. Existing condition of jardinièreslocation*





*Picture 3. Existing condition of jardinières location*



*Picture 4. Model of existing jardinières in Skopje*



*Picture 5. Model of existing jardinières in Skopje*

#### 4. Purchase and installation of 30 benches, 30 bins and 40 containers and education

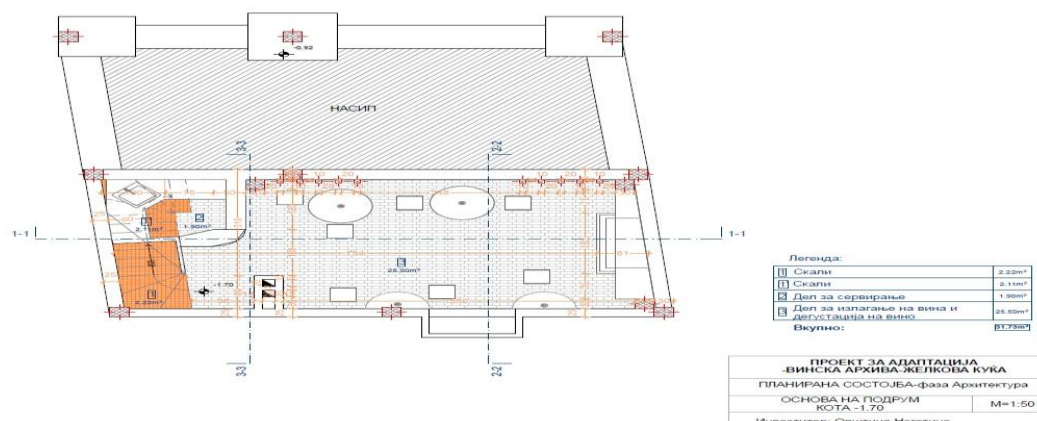
The lack of regular maintenance of locations and tourist attractions negatively affects the experience of visitors, installation of waste equipment and awareness raising education will help maintain a clear picture of the tourist locations and beyond. The benches, baskets and containers that are provided and are part of the basic project are planned for the arrangement of the existing plantations to be placed in locations where there is a shortage of baskets and containers, and are close to the activities planned for the realization of this project. After their installation, the baskets and containers will be managed by a licensed waste management company).

#### 5. Upgrade of the existing multifunctional tourist object „Zhelkova kuca” in Central City area through procurement, arrangement and equipping the basement in a modern-„WINE ARCHIVE”

„Zhelkovakuca” building is a tourist attraction and upgrade with new content - arrangement of the basement section in the Wine Archive-space where all wineries will be able to exhibit and promote their products –wine, a space that will be a place for rest and relaxation of tourists for enabling tasting of all products in one place in order to ensure the self-sustainability of the building and creation of opportunities for new working places. "Zhelkovka Kuca" is located in the center of the municipality of Negotino, has a basement 31.74 m2 which is the subject of renovation, with the space being adapted and equipped as a „Wine Archive” in order to display and taste wines produced by the Tikvesh region and local wine cellars.

With this activity shelves for storing wines, tasting glasses, barrels such as tables and chairs, an electric fireplace, a corner with a sink and a small working area as a kitchenette will be provided.

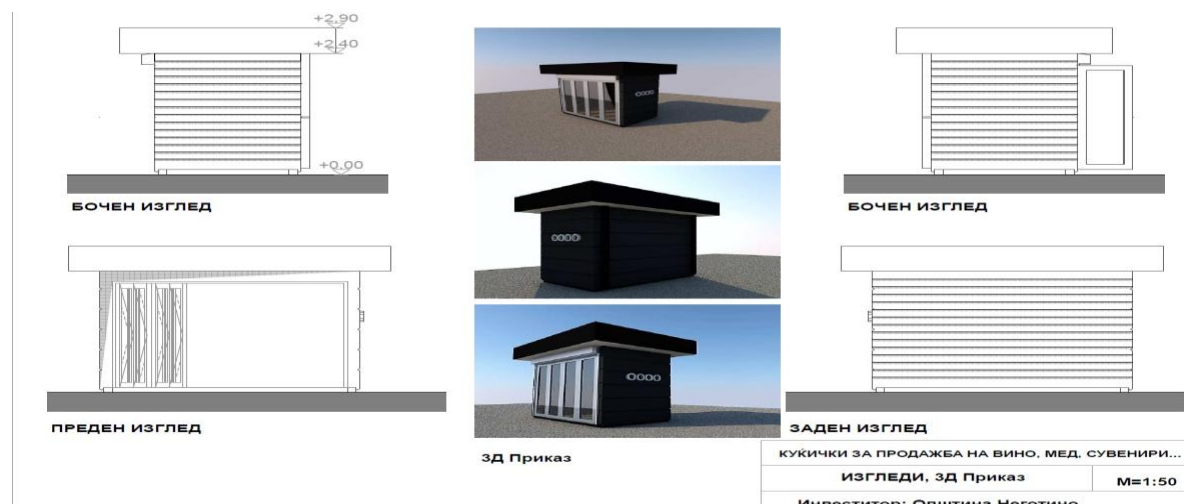




## Zhelkova kukja - WINE ARCHIVE

**6.Upgrading of the central city area through procurement and installation of fair and manifestation equipment:7 wooden houses-stands, 2 pergolas, 100 montage chairs, reconstruction of an existing stage, and setting up a designated inscription for the city on the existing stage**

Guided by the need for stands for promotion and placement of products from local producers of wine, honey, souvenirs, etc., several locations are planned on the city square where promotional stands will be placed. The wooden cottages-stands are 170 / 300cm in size and 240/370 together with the eaves around the entire stand (shown on the picture below). The position of the wooden cottages-stands is defined depending on the manifestation and cultural event occurring in the city.

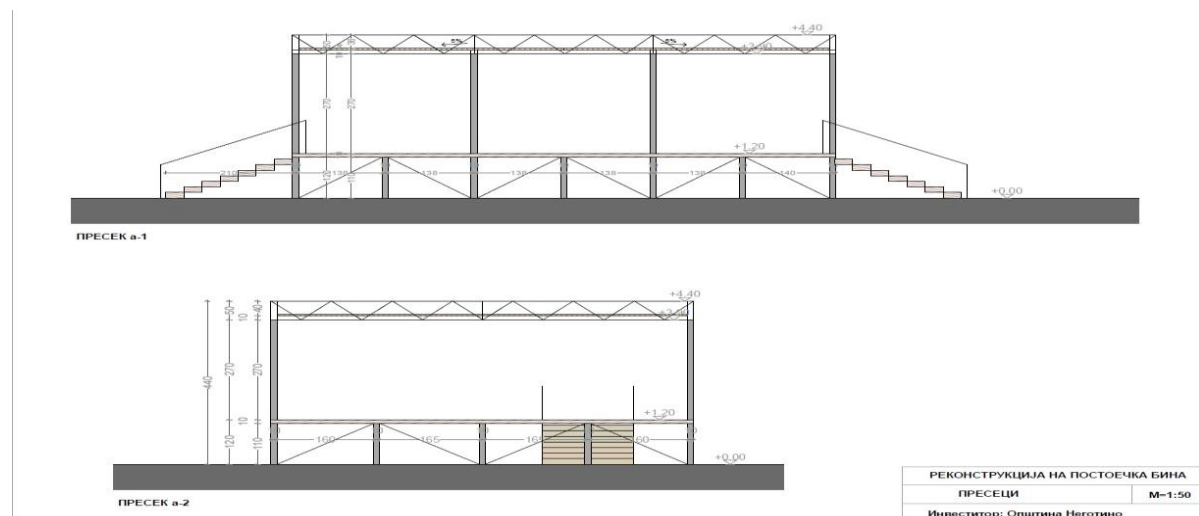


## Wooden houses-stands

Reconstruction of the stage with dimensions 9m/7m or 63m<sup>2</sup> total located on the city square implies replacement of damaged parts and replacement of the damaged tarpaulin as a background with wooden boards, replacement of the existing floor, installation of thermal



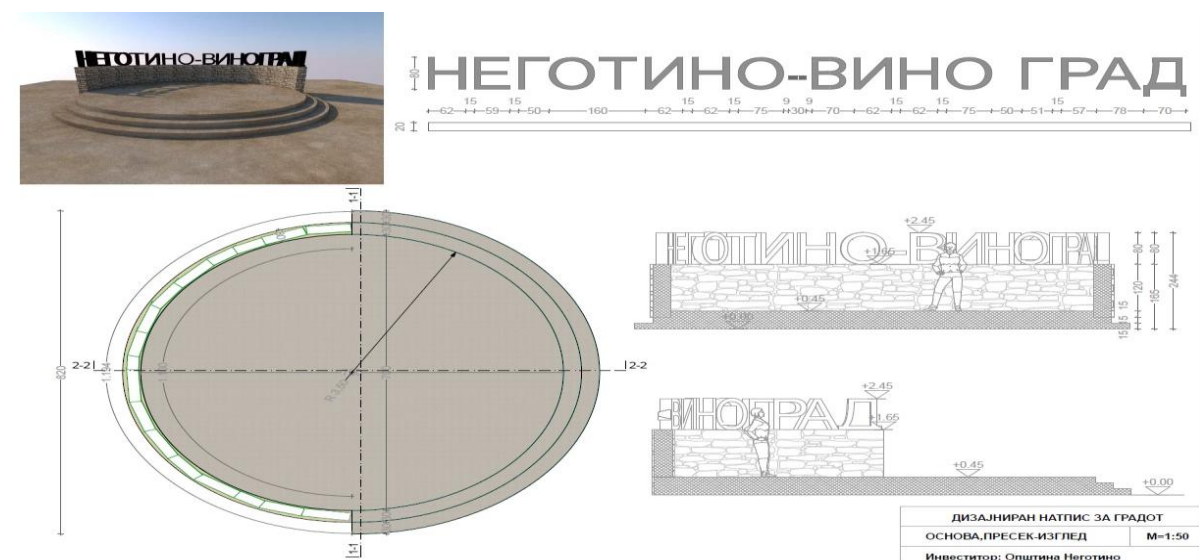
insulation roof panel instead of the existing tarpaulin. With this renovation, the appearance of the square will improve and thus the possibilities for organizing bigger cultural manifestations will be improved.



### Existing stage

Set up a designated inscription for the city on the existed stage on the central city area

On the existing stage in the height of 1 m, it is foreseen the inscription NEGOTINO-WINE CITY to be set/placed. The letters on the inscription are intended to be made of metal in the height of 0.80m. The idea of setting up such an inscription is the formation of a place recognizable for the city-a kind of sculpture where people will stop, they will be photographed, a place that will become a new check point in the city center

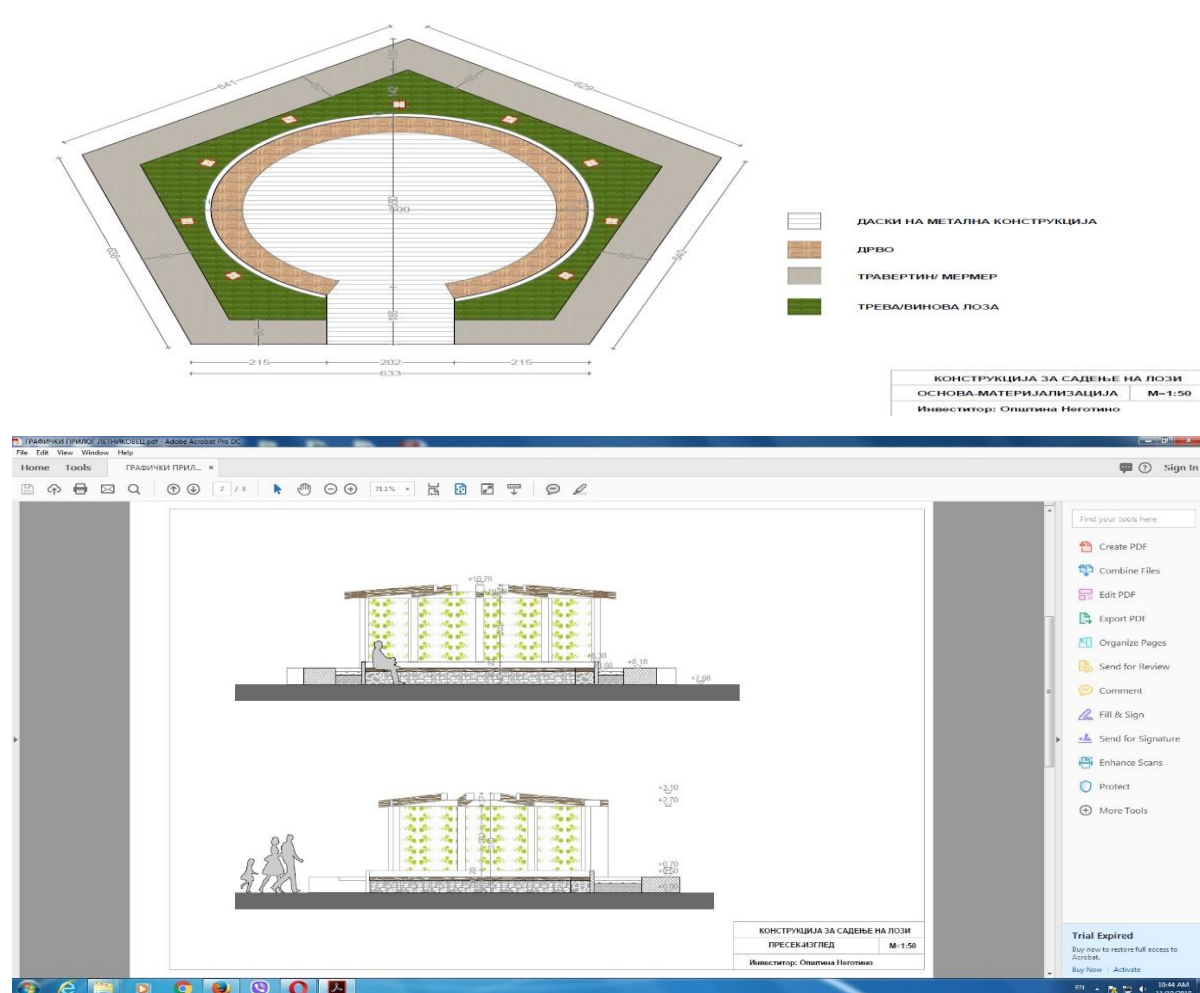


### NEGOTINO-WINE CITY

## 7. Conversion of the space provided for a fountain to a summer garden - wooden construction for planting of wine branches

-Providing a break-stop point place- infrastructure in the town square (just outside the Cultural Center in Negotino), installation of a summer garden-city wooden construction with semicircular benches which will enable passengers in motor vehicles or cyclists to make a short break from their trip, to provide leisure and sightseeing in the central city area where most of the cultural events are taking place and there are numerous restaurants and catering facilities. This summer construction is planned to become a place for solemn closing of the vine on the occasion of the holiday-St. Trifun.

The summer construction is planned to be made of wooden construction - wooden pillars and beams concentrically arranged, in a semicircle with a wooden bench also semicircular. The grape vine is planned to be planted on the wooden construction. The area of the summer garden together with the greenery is a total of 70 m<sup>2</sup>.





*Summer garden*

## 8. Set up and maintain an Info Touch Point

- Satisfying the need of visitors from information on how to get to the specific attractions – working hours and / or possible tickets to have easy access to the information they need to reserve accommodation, as well as information about local restaurants and activities such as hiking and cycling, etc. It is an approach that provides self-sustainability through leasing of advertising space and a tool for promotion and advertising to the private sector. Info point is planned to be placed in front of the municipal building in the center of the town. The Info Point post will be with screen dimensions 43 ", integrated Full HD display, multi-touch display features, built-in PC with SSD drive and Integrated speakers made from metal resistant to external influences



*Info Touch Point*

**9.** Installation 2 information boards and 20 road signs for easier access and movement of tourists from one to another tourist point will be placed. The information boards will be of dimensions (1m x 1m) with an appropriately marked stand, and are located one at the entrance to the Negotino and in the exit of the city from Negotino to Kavadarci, while the road signs will be of dimensions (0,6m X 0,45) with application of digital printed PVC foil and will be placed in more locations in the city.

## **2. Environmental category**

LRCP is supported by European Union grant and implemented jointly by Cabinet of the Deputy Prime Minister for Economic Affairs, as the implementing agency of funds, and the World Bank. LRCP has been classified as Category B project, meaning some level of adverse impact can be expected as a result of its implementation, but none of them significant, largescale or long-term. As a result of this classification OP 4.01 Environmental Assessment is triggered. Subsequently, the CDPMEA prepared Environmental and Social Management Framework (ESMF) to guide environmental due diligence of sub-projects supported through the Component 3 grant scheme, define eligibility and procedures for screening and environmental assessment. All project (and sub-project) activities must be implemented adhering with the ESMF, WB operational policies and procedures and national regulation (the strictest one prevails).

A proposed sub-project is classified as Category B- due to the fact that its future environmental impacts are less adverse than those of Category A and B+ sub-projects taking into account their nature, size and location, as well as the characteristics of the potential environmental impacts. The category would require an ESMP to assess any potential environmental impacts associated with the proposed sub-project, identify potential environmental improvement opportunities and recommended any measures needed to prevent, minimize and mitigate adverse impacts. The scope and format of the ESMP will vary depending on the sub-project, but will typically be narrower than the scope of ESIA, usually in form of ESMP. The scope of ESMP is defined in Sub-Section G from Full Applications Form and in Annex D of the ESMF. For the sub-projects involving simple upgrades, rehabilitation or adaptation of the buildings, ESMP checklist would be used (template given in Annex F of the ESMF). B- Category would include sub-projects that also: (a) involve working capital loans which include purchase and/or use of hazardous materials (e.g. petrol) or (b) process improvements that involve purchase of equipment/machinery presenting a significant potential health or safety risk. According to Macedonian laws, types of sub-projects that fall under category B- do not require EIA study.



### 3. Overview of potential environmental impacts

The environmental impacts of the project are expected to be of manageable, easy to envisage, temporary and of local impact for both types of activities;

**(a)Activities- Arrangement of trails in an existing bee park in the village of Veshje, reconstruction and adaptation of an old school building in a modern api center in the village Veshje, arrangement of existing Jardinières on Section 1 and 2and installation of a summer construction for planting of wine branches and set up a designated inscription for the city on the existed stage on the central city area andreconstruction of an existing stagemight** produce typical construction related adverse impacts: dust, noise and vibration due to demolition and construction, management of demolition construction wastes, communal solid waste, recyclable fractions such as metal, plastic etc. generation of small quantities of hazardous wastes e.g. due to accidental spillage of machine oil, lubricants, fuel and other hazardous substances, residual coatings and contaminated packaging, and potentially traffic disturbance;

**(b) installationof 30 bins and 40 containers for garbage and education, upgrade of multifunctional tourist object „Zhelkovakuca” in Central City area through procurement, arrangement and equipping the basement in a modern- „WINE ARCHIVE”, upgrade of the central city area through procurement and installation of fair and manifestation equipment: 7 wooden houses-stands, 2 awnings, montage chairs, installation of Info Touch Point,might** produce only non hazardous wastes (paper, cardboard, plastic and other synthetic materials) because of the equipment out boxing (packaging wastes).

During the *implementation of the sub-project*, the following impacts may occur:

1. Possible negative safety and health risks and impacts on the population, drivers and workers (local impacts limited to the location of renovation short term, present only in implementation phase) due to:

- Lack of occupational health and safety (OHS) measures during the renovation/adaptation works,
- Injury occurred on or near the site of works (e.g. due to lack of protection clothes or equipment, or other safety shortcomings),
- Non-compliance with safety standards and work procedures,
- Inadequate traffic management and pedestrian safety.

2. Possible impact on air quality and air emissions from vehicles transporting materials and equipment on sub-project location and transporting waste outside of the site (local impact, limited to the location of renovation/adaptation, occurring only in implementation phase) due to:

- emissions of dust from transport of materials, materials management and civil works,
- exhaust fumes from vehicles and traffic, as well as causing changes in the existing traffic circulation nearby.

3. Possible vibrations emissions and noise disturbances as a result of transport vehicles moving through the city to the renovation location as well as works themselves (local impacts limited to the location of renovation only in implementation phase).

4. Inadequate waste management and untimely collection and transport of waste. Possible side effects/impacts on the environment and adverse health effects may arise as a result of generation and management of different types of waste (primarily construction waste such as waste plywood, carpet, cloth, sponge, leftovers of gypsum boards as well as wood, metals, glass plastic, furniture, mattresses, small amounts of hazardous waste, e.g. lighting fixtures, paint and glues residues and packaging. Packaging waste (cardboard and nylon) will also be created. These impacts are local. If proper waste management is not envisaged in operation phase, there is a possibility negative impacts to be long term with repetitive occurrence but limited to inadequate waste management and untimely collection and transport the communal waste.

5. Impacts to soil and water from accidental leaks, spills and improper construction and hazardous waste management is possible. However, the produced impacts the envisaged activities are expected to produce only temporary, local, short term and limited to the period of renovation/reconstruction/smaller construction adverse environmental impacts. Expected amounts of hazardous solids and liquids used or generated as waste in the course of sub-project implementation are small.

**No impact is expected to physical cultural resources or natural habitats as sub-project is not located in/in the vicinity of nature and/or culture protected areas or objects.**

The preliminary screening showed that asbestos waste and waste radioactive lightning rods are unlikely to be generated in this sub-project, however, the mitigation measures are provided for these cases.

***-Impacts during the use of the objects:***

In the use phase the identified potential negative impacts as a result of the function of activities, equipment and objects planned within the sub-project are related with the generation of waste during the facility's use (if proper waste management is not envisaged in operation phase, there is a possibility these impacts to be long term with repetitive occurrence).

#### **4. ESMP Checklist**

ESMP Checklist is applied for minor rehabilitation or small-scale building construction. It provides “pragmatic good practice” and it is designed to be user friendly and compatible with WB safeguard requirements. The checklist-type format attempts to cover typical mitigation

approaches to common civil works contracts with localized impacts. The checklist has one introduction section (Introduction part in which the project is described, part where environmental category is defined, identified impacts, and checklist ESMP concept explained) and three main parts:

- ☐ Part 1 constitutes a descriptive part (“site passport”) that describes the project specifics in terms of physical location, the institutional and legislative aspects, the project description, inclusive of the need for a capacity building program and description of the public consultation process.
- ☐ Part 2 includes the environmental and social screening in a simple Yes/No format followed by mitigation measures for any given activity.
- ☐ Part 3 is a monitoring plan for activities during project construction and implementation. It retains the same format required for standard World Bank EMPs. It is the intention of this checklist that Part 2 and Part 3 be included as bidding documents for contractors.

#### Consultations and Disclosure

The procedure for publishing the ESMP Checklist is as follows: ESMP Checklist in Macedonian, Albanian and English language will be published on the website of the LRCP, as well as on the website of the municipality of Negotino. It will be available to the public for at least 14 days. It will be available in hard copy in the premises of the LRCP and in the municipality of Negotino and / or in the centers of the planning regions. When it is announced, the call for comments on the documents will be issued along with the available electronic and postal address for sending comments and remarks. The record of the public consultations (collected comments and questions) contains summary of the received remarks, feedback provided and should be included in the final version of the published document.

## 5. Application of the ESMP Checklist

The design process for the envisaged in the subproject "WINE, API ANDECO TOURISM IN NEGOTINO AND SURROUNDINGS" will be conducted in three phases:

1. General identification and scoping phase, in which the object for rehabilitation and adaptation is selected and an approximate program for the potential work typologies elaborated. At this stage, Parts 1, 2 and 3 of the ESMP Checklist are drafted. Part 2 of the ESMP Checklist can be used to select typical activities from a “menu” and relate them to the typical environmental issues and mitigation measures. Public consultations take place, ESMP Checklist is finalized.
2. Detailed planning and tendering phase, including specifications and bills of quantities for construction works, equipment goods, marketing and other services related to the subproject. The whole filled in tabular ESMP (Part 1, 2 and 3) should be additionally attached as integral part to the works contract as well as supervision contract, analogous to all technical and commercial terms, has to be signed by the contract parties.

3. During the works implementation phase the Contractor implements ESMP Checklists mitigation and monitoring, while environmental compliance (with ESMP Checklist and environmental and health and safety (H&S) regulation) and other qualitative criteria are implemented on the respective site and application checked/supervised by the site supervisor, which include the site supervisory engineer or supervisor of the project. The mitigation measures in Part 2 and monitoring plan in Part 3 are the basis to verify the Contractor's compliance with the required environmental provisions. Practical application of the ESMP Checklist will include the achievement of Part I for having and documenting all relevant site specifics. In the second part, the activities to be carried will be checked according to the envisaged activity type and in the third part the monitoring parameters (Part 3) will be identified and applied according to activities presented in Part 2.

The whole ESMP Checklist filled in table (Parts 1, 2 and 3) for each of the type of work should be attached as integral part of work contracts and as analogue with all technical and commercial conditions which should be signed by the contracting parties.

## **6. Monitoring and Reporting**

For the monitoring of the Contractor's safeguards due diligence, the site supervisor or responsible person appointed by the Municipality of Negotino (in the case of works that do not require engagement of supervising engineer; site supervisor in the further text) will work with Part 2 and 3 of the ESMP Checklist, i.e. the monitoring plan. Parts 2 and 3 are developed in necessary detail, defining clear mitigation measures and monitoring which can be included in the works contracts, which reflect the status of environmental practice on the working site and which can be observed/measured/ quantified/verified by the supervisor during the works.

Such mitigation measures include, but are not limited to: use of Personal Protective Equipment (PPE) and clothes by workers at all times, fixing scaffolds, and other H&S measures on site, dust generation and prevention, amount of water used and discharged in site, waste water treatment, presence of proper sanitary facilities for workers, waste collection of separate types (wood, metals, plastic, hazardous waste, e.g. paint residues, spent engine oil) in separate clearly marked waste bins/containers on separate pre-defined location on rehabilitation site and in sufficient number, recording of waste quantities, proper organization of disposal pathways and facilities, or reuse and recycling wherever possible. Waste can be transported and landfilled/processed only by licensed companies.

In addition to Part 3, the site supervisor should check whether the contractor complies with the mitigation measures in Part 2. Reporting on implementation of practices should be described in the regular report toward PIU. The implementation of the measures should be followed before commencing work, during the rehabilitation and after its completion. Implementation of the ESMP Checklist defined measures will be monitored by the



supervisor/supervising engineer, the Municipality of Negotino / communal inspector and the departments for urbanism and local development whose employees are members of the project team as well as PIU environmental expert. An acceptable monitoring report from the contractor or site supervisor would be a condition for full payment of the contractually agreed remuneration, the same as technical quality criteria or quality surveys. The reporting on ESMP Checklist implementation will be quarterly.

To assure a degree of leverage on the Contractor's environmental performance, an appropriate clause will be introduced in the works contracts, specifying penalties in case of noncompliance with the contractual environmental provisions, e.g. in the form of withholding a certain proportion of the payments until the corrective measures are applied and sub-project in compliance, its size depending on the severity of the breach of contract. For extreme cases a termination of the contract shall be contractually tied in.

The applicant is obliged to regularly submit 3-month reports on the ESMP Checklist implementation and monitoring of environmental mitigation measures in the form of a tabular overview (tables mitigation plan and monitoring plan) with an additional column giving the status of the measures, observations and comments, and Monitoring of the measure (implemented / not implemented, results, observations, comments, concerns, when, etc.).

<b>PART 1: INSTITUTIONAL &amp; ADMINISTRATIVE</b>	
Country	Republic of Macedonia
Sub-Project title	"WINE, API and ECO TOURISM IN NEGOTINO AND SURROUNDINGS"
Scope of subproject and particular activities	<p>This project belongs to the category of small projects where the following activities are envisaged:</p> <ol style="list-style-type: none"> <li><b>1. Parterre ground arrangement of trails in an existing bee park in the village of Veshje (Garden work, earthworks, and final linings)</b></li> <li><b>2. Reconstruction and adaptation of an old school building in a modern api center in the village Veshje (reconstruction works (roof, floor, windows and door replacement), placement of inventory, equipment and finishing works)</b></li> <li><b>3. Arrangement of existing Jardinières-section 1 and 2</b> -removal of existing concrete and soil, construction of jardinières and horticultural arrangement</li> <li><b>4. Procurement and installation of urban equipment 30 benches 30 bins and 40 containers</b> for waste and education with flyers for classification and selection of waste</li> <li><b>5. Upgrade of the existing multifunctional tourist</b></li> </ol>

	<p><b>facility</b>Želkovahousebasement in the Central City area in to<b>"WINE ARCHIVE"</b> (setting up an inventory)</p> <p><b>6. Upgrade of the central city area through procurement and installation of fair and manifestation equipment: 7 wooden houses, 2 awnings, 100 montage chairs</b> and reconstruction of an existing stage</p> <p><b>7. Installation of Info Touch Point</b></p> <p><b>8. Marking and signaling by placing 2 information boards and 20 road signs</b></p> <p><b>9. Setting up a summer Construction plot</b> for planting vine- branches in the central city area</p>	
Institutional arrangements (Name and contacts)	<b>Project management*</b>	
	Investor: Municipality of Negotino	Tel: 043/361 045 Fax: 043/361 933 E-mail:info@negotino.gov.mk
	Project Coordinator: MALolita Ristova	Tel: 070/370-555 E-mail: loli_ristova@yahoo.com lolita.ristova@negotino.gov.mk
	Contractor: Will be determined after completing the public procurement procedures for the sub-project need	/
Implementation arrangements (Name and contacts)	<b>Supervision** (Upon completion of the procedure, the name and contact of the Supervising Engineer will be added to the fields below).</b>	
	Will be determined after completing the public procurement procedures for the sub-project	/

	need	
<b>SITE DESCRIPTION</b>		
Name of site	The specific locations for the implementation of the sub-project are on the territory of the municipality of Negotino, from which six locations are in the city area and two in the settlement Veshje	
Describe site location	<ul style="list-style-type: none"> <li>- Entrance and exit of the city, Jardinièreson section 1 and section 2 on Str. "Marshal Tito" (KP.br.8763, KP No.9148, KP No.10159, KP No.9637 and KP No.1112838 KO Negotino</li> <li>- 2 information boards and 20 road signs. On St.Marshal Tito "(KP.br.8763, KP No.9148, KP No.10159, KP No.9637 and KP No.1112838 KO Negotino</li> <li>- On the central city area - city square -Reconstruction of the existing stage KP No.10624 / 1KONegotino and Placement of the designated inscription for the city in the central city area KP 10624/1 as well as :</li> <li>- Placement of fair and manifestation equipment 7 wooden houses, 2 awnings, mounting base 100 montage chairs, and</li> <li>- Installation and construction of a summer Construction plot for planting vines</li> <li>- Setting up an info Touch Point on- KP 9817 in front of a municipal building</li> <li>- Zhelkova house building (Adapting the basement-in wine archive) KP No. 9894/1 KO Negotino</li> <li>- Api center in the village-Veshje with parterre/ground arrangement of trails KP. No.557KO Veshje.</li> </ul>	Annex 1: Site information (figures from the site)
Who owns the	Owner of the land on which activities are foreseen for the realization of	

land?	<p>the project:</p> <p>Municipality of Negotino is owner of: Želkova kuća - Wine archive, and API Center village Vesje, yard of the municipal building, and the rest of the cadaster parcels is owned by the Republic of Macedonia</p>
Geographic description	<p>1. Arrangement of existing Jardinières on Section 1 and 2</p> <p>East entrance to the town of Negotino which connects city of Negotino with the international highway Skopje - Gevgelija and the regional road Negotino - Stip, and the western entrance to the town of Negotino which connects it with the regional road Negotino - Kavadarci</p> <p>2. Želkova kuća - Wine archive, reconstruction of an existing stage, setting up an info touch point, part of information boards and the other activities are located in the central city area</p> <p>3. API Center and parterre arrangement of a bee park in the village of Vesje</p>
<b>LEGISLATION</b>	
Identify national & local legislation & permits that apply to subproject activity(s)	<p><input type="checkbox"/> Law on Construction ("Official Gazette of the Republic of Macedonia" No. 130/09, 124/10, 18/11, 36/11, 54/11, 59/11, 13/12, 144/12, 79/13, 137 / 13, 163/13, 27/14, 28/14, 42/14, 44/15, 129/15 and 39/16)</p> <p><input type="checkbox"/> Law on environment ("Official gazette of the RM" No. 53/05, 51/05, 81/05, 24/07, 159/08, 83/09, 48/10, 124/10, 51/11, 123/12, 93/13, 187/13, 42/14, 44/15, 129/15, 192/15 and 39/16 )</p> <p><input type="checkbox"/> Law on waters ("Official gazette of the RM" No. 87/08, 6/09, 16109, 83/10, 51/11, 44/12, 23/13, 163/13, 180/14, 146/15 and 52/16);</p> <p><input type="checkbox"/> Law on waste management (Official gazette of the RM" No. 68/04, 71/04, 107/07, 102/08, 143/08, 124/10, 09/11, 51/11, 123/12 and 163/13);</p> <p><input type="checkbox"/> Rulebook on the manner of handling municipal and other type of non-hazard waste (Official gazette of RM" No. 147/07);</p> <p><input type="checkbox"/> Law on management of packaging and packaging waste ("Official gazette of the RM" No. 161/09, 17/11, 47/11, 136/11, 6/12, 39/12 and 163/13);</p> <p><input type="checkbox"/> List of waste ("Official gazette of the RM" No. 100/05);</p> <p><input type="checkbox"/> Law on chemicals ("Official gazette of the RM" No. 145/10 and</p>



	<p>53/11);</p> <p><input type="checkbox"/> Law on ambient air quality (“Official gazette of the RM“ No. 67/04, 92/07, 35/10, 47/11, 100/12 and 10/15);</p> <p><input type="checkbox"/> Law on protection against environmental noise (“Official gazette of the RM“ No.79/07, 124/10 and 47/11);</p> <p><input type="checkbox"/> Rulebook on the limited values of the level of environmental noise (“Official gazette of the RM“ No.147/08);</p> <p><input type="checkbox"/> Decision on determining in which cases and under what conditions are considered disturbed the peace of citizens from harmful noise (“Official gazette of the RM“ No 1/09);</p> <p><input type="checkbox"/> Law on nature protection (“Official gazette of the RM“ No. 67/04, 14/06, 84/07, 35/10, 47/11, 148/11, 59/12, 13/13, 163/13 and 41/14); <input type="checkbox"/> Law on protection and rescue (“Official gazette of the RM“ No 36/04, 49/04, 86/08, 124/10 and 18/11);</p> <p><input type="checkbox"/> Law on occupational health and safety (“Official gazette of the RM“ No 92/07, 136/11, 23/13 and 25/13)</p>
--	--

## **PUBLIC CONSULTATION**

Identify when / where the public consultation process took place and what were the remarks from the consulted stakeholders

The procedure for publicly consulting the ESMP Checklist) is following: The ESMP Check list has to be published on the LRCP web page, the Agency for promotion and support of tourism web page and the web page of the municipality where the project will be realized. The document has to be published and available for the public at least 14 days. Also, the document has to be available in hard copy in the LRCP office and the municipal premises. When it is announced, the call for comments and remarks on the documents should be issued along with the available electronic and postal address for sending the notes. The minutes of meeting from the public consultation (collected comments and questions) contains: basic information about the disclosure, list of participants and short summary of the participants comments, that will be included in the final version of the document.

## **INSTITUTIONAL CAPACITY BUILDING**

Will there be any capacity building?

There are no capacity building activities that address environmental issues.



Part 2: Environmental /Social Screening			
Will the site activity include/involve any of the following?	Activity	Status	Additional references
	A. General requirements	<input checked="" type="checkbox"/> Yes <input type="checkbox"/> No	See Section A below
	B. Building reconstruction and adaptation	<input checked="" type="checkbox"/> Yes <input type="checkbox"/> No	See Section A and B below
	C. Small construction	<input checked="" type="checkbox"/> Yes <input type="checkbox"/> No	See Section A and C below
	D. Hazardous or toxic materials <sup>1</sup>	<input checked="" type="checkbox"/> Yes <input type="checkbox"/> No	See Section A, and D below
	E. Traffic and Pedestrian Safety	<input checked="" type="checkbox"/> Yes <input type="checkbox"/> No	See Section A,B and E below
	F. Procurement of chemicals	<input type="checkbox"/> Yes <input checked="" type="checkbox"/> No	See Section F below
Table 2			

<sup>1</sup> Toxic / hazardous material includes and is not limited to asbestos, toxic paints, removal of lead paint, etc.

ACTIVITY	PARAMETER	MITIGATION MEASURES CHECKLIST
A.General Conditions	Notification and Workers' Health & Safety	<ul style="list-style-type: none"> <li>• Providing information to local population about the time of commencement and time of duration of construction activities by preparing Notification which will be placed on the municipality notice board and on the municipal web page;</li> <li>• The construction locations are fenced and marked. Entry for unauthorized persons within the project locations is prohibited. Informative signs and board to inform the local population are installed in the project locations;</li> </ul> <p>Dangerous areas (e.g. pits, ditches, etc.) will be clearly marked and fenced off;</p> <ul style="list-style-type: none"> <li>• Local construction and environmental inspectorates are informed of works before the start;</li> <li>• All needed permits are obtained before the commencement of works (including construction and other);</li> <li>• All work will be carried out in safe and disciplined manner;</li> <li>• Workers personal protective clothes and equipment is available in sufficient quantities and is worn/used at all times;</li> <li>• Open pits are covered and clearly marked when not worked on;</li> <li>• Ensure the appropriate marking and informational board of the renovation/adaptation and small construction sites;</li> <li>• Marking out the site for temporal storage of the reconstruction material near the site;</li> <li>• Providing warning tapes, fences and appropriate signage informing danger, key rules and procedures to follow;</li> <li>• The surrounding area near the buildings should be kept clean;</li> </ul>

		<ul style="list-style-type: none"> <li>• Machines should be handled only by experienced and appropriately trained personnel, thus reducing the risk of accidents;</li> <li>• All workers must be familiar with the fire hazards and fire protection measures and must be trained to handle fire extinguishers, hydrants and other devices used for extinguishing fires;</li> <li>• Devices, equipment and fire extinguishers should be always functional, so in case of need they could be used rapidly and efficiently. First aid kits should be available on the site and personnel trained to use it;</li> <li>• Procedures for cases of emergency (including spills, accidents, etc.) are available at the site;</li> <li>• The portable toilet should be placed on the construction site and maintenance by the certified company;</li> <li>• Purchased equipment will be installed and used respecting all safety measures prescribed by the producer of equipment and best practices;</li> <li>• Control of vehicle safety and removal of defective vehicles from the location.</li> </ul>
	Chance Findings	<ul style="list-style-type: none"> <li>• The procedures will follow the national legislation for chance findings;</li> <li>• In the case there would be chance findings works will be stopped and authorised competent authority (Ministry of Culture and regional museum and institute) informed within 24 hours;</li> <li>• The contractor will further follow competent authorities' instructions and the works will recommenced upon their approval;</li> <li>• Working areas, site camps, etc. should be located away from the heritage and archeological sites;</li> <li>• Adequate care and awareness rising shall be taken to enlighten construction workers</li> </ul>

		on the possible unearthing of archeological relics;
	Noise	<ul style="list-style-type: none"> <li>•The level of noise will not exceed the allowed level of noise in accordance to the existing law;</li> <li>•The monitoring on the level of noise should be performed during the construction activities (per request from authorized environmental inspector);</li> <li>•It is forbidden to perform the construction activities during period of night;</li> <li>•The operation in the construction site is limited between 07.00-19.00 hour;</li> <li>•Workers should be provided with ear protection devices (plugs and/or ear pads).</li> </ul>
	Water Quality	<ul style="list-style-type: none"> <li>•It is forbidden to dispose any kind or fractions of waste in or near the water recipients in Negotino and surroundings;</li> <li>•Prevent hazardous spillage coming from waste (temporary waste storage should be leakage protected and those for hazardous or toxic waste equipped with secondary containment system, e.g. double walled or bunded containers);</li> <li>•If hazardous spillage occurs, curb and remove it, clean the site and follow procedures and measures for hazardous waste management;</li> <li>•In the case of any run-off coming from works area possibly contaminated by hazardous substances shall be collected on site to a temporary retention basin and transported to an adequate licensed waste water treatment plant;</li> <li>•Ensure that water pumped back to natural waterways never exceeds the regulatory water quality standards by regular testing;</li> </ul>

		<ul style="list-style-type: none"> <li>•Install and maintain of proper sanitary facilities for workers. The wastewater from these sources should be transported to proper waste water treatment facilities;</li> <li>•Prevent hazardous spillage coming from tanks, containers (mandatory secondary containment system, e.g. double walled or bunded containers), construction equipment and vehicles (regular maintenance and checkups of oil and gas tanks, machinery and vehicles can be parked (manipulated) only on asphalted or concrete surfaces with surface runoff water collecting system;</li> <li>•Working site run-offs with possible charge with suspended matter should be filtered before spillage to natural flows; <ul style="list-style-type: none"> <li>- No natural water bodies in the vicinity will be used for water supply. Only existing water supply systems will be used in construction and operational phase.</li> </ul> </li> </ul>
	Air Quality	<ul style="list-style-type: none"> <li>•The construction site, the transport routes and the locations where the materials are handled should be sprayed with water on dry and windy days;</li> <li>•Construction materials should be kept covered in suitable places in order to reduce the distribution of dust;</li> <li>•The vehicles, construction equipment and machines should be operated by experienced personnel well maintained and in accordance with the relevant emission standards;</li> <li>•Permanent maintenance of the vehicles (washing the wheels) and construction machines in order to identify accidental leakage of motor oils, emissions and the pollution expansions;</li> </ul>



		<ul style="list-style-type: none"> <li>•The materials that produce dust should be covered during the transportation;</li> <li>•Using protective masks for the workers in case of dust;</li> <li>•Debris chutes will be used in removal of materials from heights;</li> <li>•Ignition of fire and burning the waste at or around the construction site is forbidden.</li> </ul>
	Soil	<ul style="list-style-type: none"> <li>• Soil erosion and landslide protection will be adequately applied in line with the national legislation and best practices where needed.</li> <li>•Vehicles and machinery can be parked, washed and maintained only at designated areas with impermeable surface with a collection and treatment system (oil and grease separator);</li> <li>• Protection of sediments spread by fences and barriers;</li> <li>•Strip soil only as necessary and store/replace reuse post construction;</li> <li>•Use of antifreeze and/or accelerator compounds is not allowed;</li> <li>•Protect and restore non-construction areas. Design slopes and retaining structures to minimize risk, provide appropriate drainage and vegetation cover;</li> <li>•Carry out surface drainage works to divert the rainwater that would erode the soil;</li> <li>•Apply storm water management to minimize erosion and offsite sediment delivery to receiving waters;</li> <li>• •Parking site has to be respected following the defined place.</li> </ul>
	Waste management	<ul style="list-style-type: none"> <li>•Identification of different types of waste in the construction site (soil, sands, bottles, food, parts of pipes, paper, crushed concrete, etc);</li> <li>•Waste classification according to the National Waste List;</li> <li>•Transportation and final disposal of inert, construction and communal waste is</li> </ul>

		<p>carried out by the licensed landfill with valid operating permit;</p> <ul style="list-style-type: none"> <li>•The potential hazardous waste (engine oils, fuel for a vehicle) should be collected separately and an agreement should be made with a subcontractor who will have authorization to collect and transport (and temporarily stored, if applicable) the hazardous waste. Hazardous waste will be processed or disposed only to processing plants/landfills with valid licenses;</li> <li>•Burning of the construction waste at site is prohibited;</li> <li>•Containers for each identified waste category are provided in sufficient quantities and positioned conveniently;</li> <li>•Waste collection and disposal pathways and licensed landfills/processing plants will be identified for all major waste types expected from demolition and construction activities;</li> <li>•Mineral (natural) construction and demolition wastes will be separated from general refuse, organic, liquid and chemical wastes by on-site sorting and temporarily stored in appropriate containers. Depending of its origin and content, mineral waste will be reapplied to its original location or reused;</li> <li>•The records of waste disposal will be regularly updated and kept as proof for proper management, as designed;</li> <li>•Whenever feasible the contractor will reuse and recycle appropriate and viable Materials;</li> <li>•Discarding any kind of waste (including organic waste) or waste water to the</li> </ul>
--	--	--

		<p>surrounding nature or water-bodies is strictly forbidden;</p> <ul style="list-style-type: none"> <li>•Collect, transport and final disposal/processing of the communal waste by a licensed company;</li> <li>•The construction waste should be promptly removed from the site and re-used if possible;</li> <li>•The incineration of all waste at site or unlicensed plants and locations is prohibited;</li> </ul>
	Materials management	<ul style="list-style-type: none"> <li>•Existing air-conditioning units are not to be refilled or emptied. If discarded, must be handled by specialized licensed companies;</li> <li>•Coarse aggregate in concrete applied and used in rehabilitation need to conform to durability and graduation requirements;</li> <li>•Mineral resources (aggregate, sand, gravel, cement etc.) are procured only from licensed companies with valid concessions for extraction/exploitation. The companies can prove H&amp;S measures and environmental management is in place;</li> <li>•No air-conditioning systems containing ozone depleting substances (CFCs) are to be used;</li> <li>•No lead paint or CFL (compact fluorescent lamp) lightening will be used.</li> </ul>
	Biodiversity and nature protection	<ul style="list-style-type: none"> <li>• Only native plants can be used for greening.</li> <li>• No pesticides will be used in the implementation or use phase (e.g. for maintenance of grapevine or/and other/newly greened areas).</li> </ul>

	Safety of traffic	<ul style="list-style-type: none"> <li>•Traffic regulation plan is prepared and implemented in coordination with Municipality and competent authority (traffic police) as well as distribution and installment of signs if installed near roads;</li> <li>• Traffic will be regulated in the safe manner. Safety of pedestrians will be ensured by use of safe-passages;</li> <li>•Safety and regulation notification, signage and signage will be used appropriately. <ul style="list-style-type: none"> <li>- Safety passages will be secured for pedestrians.</li> </ul> </li> </ul>
B. Building reconstruction and adaptation	Materials management	<ul style="list-style-type: none"> <li>•No new materials containing asbestos or lead-based paint will be used;</li> <li>•Coarse aggregate in concrete applied and used in rehabilitation need to conform to durability and gradation requirements. The aggregate must be virgin (not used previously) and preferably locally produced;</li> <li>•Mineral resources (aggregate, sand, gravel, etc.) are procured only from licensed companies with valid concessions for extraction/exploitation. The companies can prove H&amp;S measures and environmental management is in place.</li> </ul>
	Community Safety	<ul style="list-style-type: none"> <li>• Ensure safety of building users e.g. provide safe passages and protection from falling objects;</li> <li>• Timely inform users of premises and neighboring communities of upcoming works;</li> <li>• In the case the traffic will be interrupted, organize alternative ruts in cooperation with the Municipality; <ul style="list-style-type: none"> <li>- Safety of rehabilitated objects and buildings will be ensured in design, construction and use phase.</li> </ul> </li> </ul>
C. Small construction	Materials management	<ul style="list-style-type: none"> <li>•No new materials containing asbestos or lead-based paint will be used;</li> <li>•Coarse aggregate in concrete applied and used in rehabilitation need to conform to durability and gradation requirements. The aggregate must be virgin (not used previously) and preferably locally produced;</li> </ul>

		<ul style="list-style-type: none"> <li>•Mineral resources (aggregate, sand, gravel, etc.) are procured only from licensed companies with valid concessions for extraction/exploitation. The companies can prove H&amp;S measures and environmental management is in place.</li> </ul>
	Community Safety	<ul style="list-style-type: none"> <li>• Ensure safety of building users e.g. provide safe passages and protection from falling objects.</li> <li>• Timely inform users of premises and neighboring communities of upcoming works.</li> <li>• In the case the traffic will be interrupted, organize alternative ruts in cooperation with the Municipality.</li> </ul>
D. Hazardous or toxic materials	Asbestos management, radioactive lightning rods	<ul style="list-style-type: none"> <li>•If asbestos is located on the project site, mark clearly as hazardous material and inform the environmental inspection as well as project environmental expert.</li> <li>•The asbestos prior to removal (if removal is necessary) will be treated with a wetting agent to minimize asbestos dust.</li> <li>•Asbestos will be handled, transported and disposed by licensed companies employing skilled &amp; experienced professionals.</li> <li>•If asbestos material is stored temporarily, the wastes should be securely enclosed inside closed containments and marked appropriately.</li> <li>•The removed asbestos will not be reused but disposed in a safe manner (sealed in containers or bags, in concrete cassettes, etc.) on a licensed landfill.</li> <li>•In the case radioactive lightning rods are found on the premises, the environmental inspectorate and other competent authority will be informed, as well as Project</li> </ul>

		<p>Environmental Expert. Competent authority instructions will be followed on dismantling, handling, transport and storage in line with the national legislation. Only specialized, licensed companies for handling radioactive materials are to be engaged for this work.</p>
	Toxic / hazardous materials and waste management	<ul style="list-style-type: none"> <li>•Temporarily storage on site of all hazardous or toxic substances (including wastes) will be in safe containers labeled with details of composition, properties and handling information. Chemicals are managed, used and disposed, and precautionary measures taken as required in the Material Safety Data Sheets (MSDS);</li> <li>•Hazardous substances (including liquid wastes) will be kept in a leak-proof container to prevent spillage and leaking. This container will possess secondary containment system such as bunds (e.g. bunded-container), double walls, or similar. Secondary containment system must be free of cracks, able to contain the spill, and be emptied quickly;</li> <li>•The containers with hazardous substances must be kept closed, except when adding or removing materials/waste. They must not be handled, opened, or stored in a manner that may cause them to leak;</li> <li>•The containers holding ignitable or reactive wastes must be located at least 15 meters (50 feet) from the facility's property line. Large amounts of fuel will not be kept at the site;</li> <li>•The wastes are never mixed and are transported by specially licensed carriers and</li> </ul>

		<p>disposed/processed only in a licensed facility;</p> <ul style="list-style-type: none"> <li>•Paints with toxic ingredients or solvents or lead-based paints will not be used;</li> <li>•Hazardous waste will be transported and handled only by licensed companies in lie with the national regulation;</li> <li>•Hazardous waste will be disposed only to licensed landfills or processing plants.</li> </ul>
<b>E. Procurement of chemicals</b>	<p>Improper or lack of proper management could increase the environmental and occupational safety risks and health risks to all citizens</p>	<ul style="list-style-type: none"> <li>•Chemicals are managed, handled and stored in accordance to Materials Safety Data Sheet (MSDS)</li> <li>•Chemicals are purchased from authorized dealer</li> <li>•Chemicals are managed and handled only by authorized and adequately trained and experienced personal/staff .</li> <li>•Hazardous substances (including liquid wastes) will be kept in a leak-proof container to prevent spillage and leaking. This container will possess secondary containment system such as bunds (e.g. bunded-container), double walls, or similar. Secondary containment system must be free of cracks, able to contain the spill, and be emptied quickly;</li> </ul>



PART 3: MONITORING PLAN							
Phase	What (Parameter will be monitored?)	Where (Is the parameter to be monitored?)	How (Is the parameter to be monitored?)	When (Define the frequency / or continuity?)	Why (Is the parameter being monitored?)	Cost (If not included in project budget)	Who (Is responsible for monitoring?)
Pre-Construction	All required permits are obtained before works start.	At the city administration	Inspection of all required documents	Before works start.	To ensure the legal aspects of the rehabilitation activities	/	Contractor; Supervisor of the construction works; Construction inspector, LRCP EE
	Public and relevant institutions are notified	Contractor's premises	Inspection of all necessary documents	Before works start.	To ensure public awareness	/	Contractor; Beneficiary, LRCP EE
	Safety measures for workers, residents and tourists in the in Negotino and surroundings	At the locations where activities for the realization of the project are foreseen	Visual checks and reporting to the official representatives from the municipality of Negotino and supervision engineer	During construction works with special focus on the preliminary activities	To prevent health and safety risks – mechanical injuries and to provide safe access and mobility in Negotino	included in project budget	Contractor; Supervisor of the construction works; Authorized environmental inspector, Construction inspector, LRCP EE
During activity implementation	Safe traffic flow in the locations where activities for the realization of the project are foreseen in Negotino and surroundings	At the locations where activities for the realization of the project are foreseen.	Visual checks and reporting to the official persons	During the working days	To ensure coordinated traffic flow in the locations where activities for the realization of the project are foreseen in Negotino and surroundings	/	Contractor; Supervisor of the construction works; Authorized environmental inspector, Construction inspector, LRCP EE

	<p>Protective equipment (glasses, masks, helmets, boots, etc.) worn at all times, safety warning and instruction are on site:</p> <p>Workers are adequately trained and certified for position and work they perform.</p> <p>Emergency procedures are available and communicated to all workers</p>	At the locations where activities for the realization of the project are foreseen	Visual checks and reporting to the official representatives from the municipality of Negotino and supervision engineer	Unannounced inspections during work	To prevent health and safety risks – mechanical injuries and to provide safe access and mobility Negotino and surroundings	/	Contractor; Supervisor of the construction works; Authorized environmental inspector, Construction inspector, LRCP EE
	<p>Locations where activities for the realization of the project are foreseen are well organized: fences, warnings, sign postage in place.</p> <p>Dangerous areas are fenced and marked.</p> <p>Sanitary facilities available in sufficient number.</p> <p>The site is inaccessible for public.</p>	At the locations where activities for the realization of the project are foreseen	Inspection	Unannounced inspections during work	To prevent accidents	/	Contractor; Supervisor of the construction works Construction inspector
	Primary selection of the waste produced in the locations where activities for the realization of the project are foreseen	At the locations where activities for the realization of the project are foreseen	Physical selection of the waste	During period of construction works	Waste classification according to the National Waste List	/	Contractor; Supervisor of the construction works; Authorized environmental inspector, Construction

							inspector, LRCP EE
	Covering or wetting down transported materials that can generate dust. Keeping the site wet and protected from dust spreading Protecting from dust while unloading There is no burring at the site.	At the locations where activities for the realization of the project are foreseen	Supervision	Continuously	To ensure minimal disruption to air quality	/	Contractor; Supervisor of the construction works; Authorized environmental inspector, Construction inspector, LRCP EE
	Collection, transport and hazardous waste (if any)	At the safe temporary location on construction site in separate waste containers	Inspection of the transport lists and the conditions of the store site	Before the transportation of the hazardous waste (if any)	To improve the waste management at local and national level/ Hazardous waste to be handled and transported by licensed complany	/	Authorized company for collecting and transportation of hazardous waste (if any), Authorized environmental inspector, Construction inspector, LRCP EE
	Collection, transport and final disposal of the solid waste	At the locations where activities for the realization of the project are foreseen .	Visual monitoring and inspection of the transport lists of the contractor	Daily level after the collection and transportation of the solid waste	Do not leave the solid waste on the construction site and to avoid negative impact to the local environment and the local inhabitants health	/	Contractor; Supervisor of the construction works; Authorized environmental inspector, Construction inspector, LRCP EE

	Waste incineration prohibition	At the locations where activities for the realization of the project are foreseen	Visual monitoring and Inspection	Unannounced inspection	To ensure efficient waste management and avoid negative effect on air pollution	/	Contractor; Supervisor of the construction works; Authorized environmental inspector, Construction inspector, LRCP EE
	Air pollution parameters of dust, particulate matter	At the locations where activities for the realization of the project are foreseen .	Sampling by authorized agency	Upon complaint or negative inspection finding	To ensure no excessive emission during works	/	Supervisor of the construction works
	Level of noise and vibration	At the locations where activities for the realization of the project are foreseen .	Monitoring on the level of noise dB (with suitable equipment)	Upon complaint or inspection finding	To determine whether the level of noise is above or below the permissible level of noise at the construction site (Permanently during the construction works through inspection of the construction site according to the national legislative)	/	Contractor; Accredited company for measuring the level of provided by the contractor; Authorized environmental inspector, Construction inspector, LRCP EE

Operational phase	Quantity of generated waste by visitors of the api center and wine archive; waste is disposed to the legal landfill	Directly on site and directly on the legal landfill by Public Enterprise	Visually and through the documentation of Public Enterprise	While the api center and wine archive are working	In order to eliminate possible negative environmental impacts	The cost of implementing these measures will include the camp's work plan	Project coordinator/ Municipality
-------------------	---	--	---	---	---	---	--------------------------------------

Annex 1 of the ESIA Checklist: Information for Location(pictures from location)



*Picture 1: Negotino and Village Veshje*



*Picture 2: location of old school building and parterre - trails in a bee park in the village of Veshje*



*Picture 3: Bee park in Village Veshje*

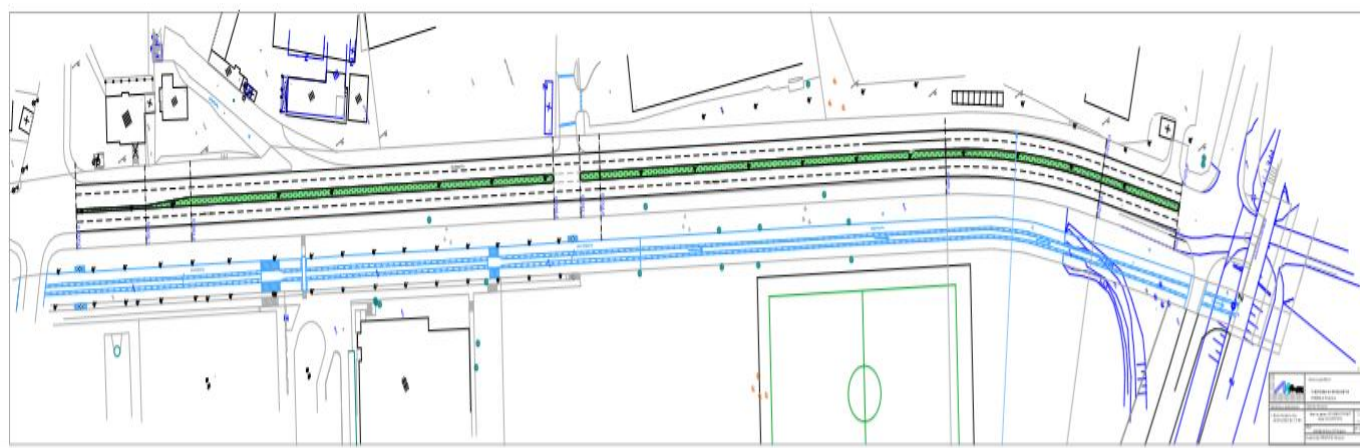




*Picture 4: Bee park in Village Veshje*

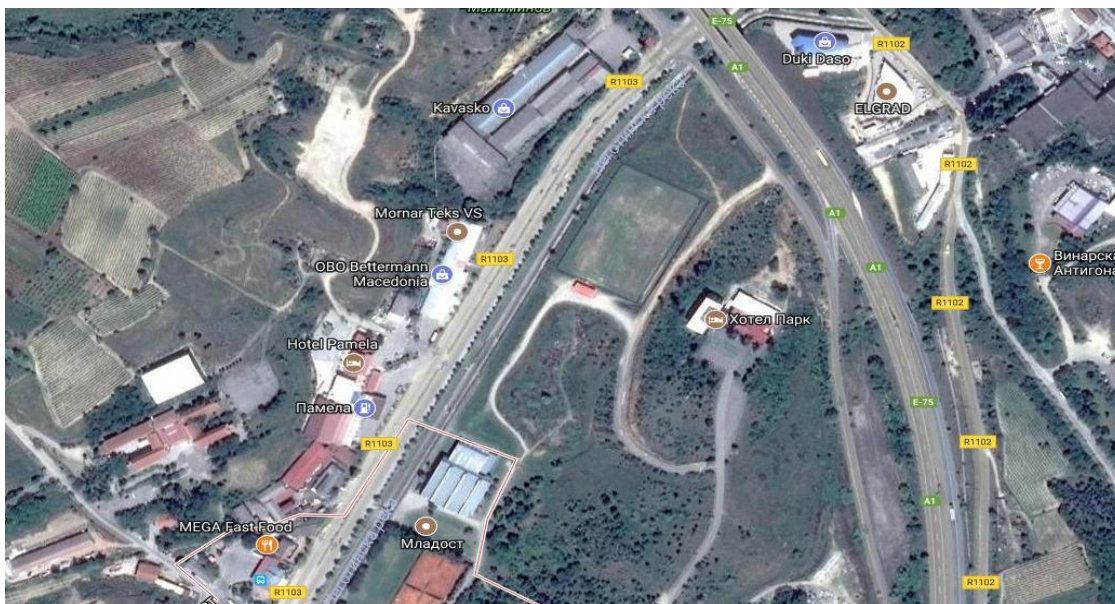


*Picture 5: School building in village Veshje (current state)*



*Picture 6: Envisaged Location for construction of the Jardinières- eastern entrance of Negotino town*

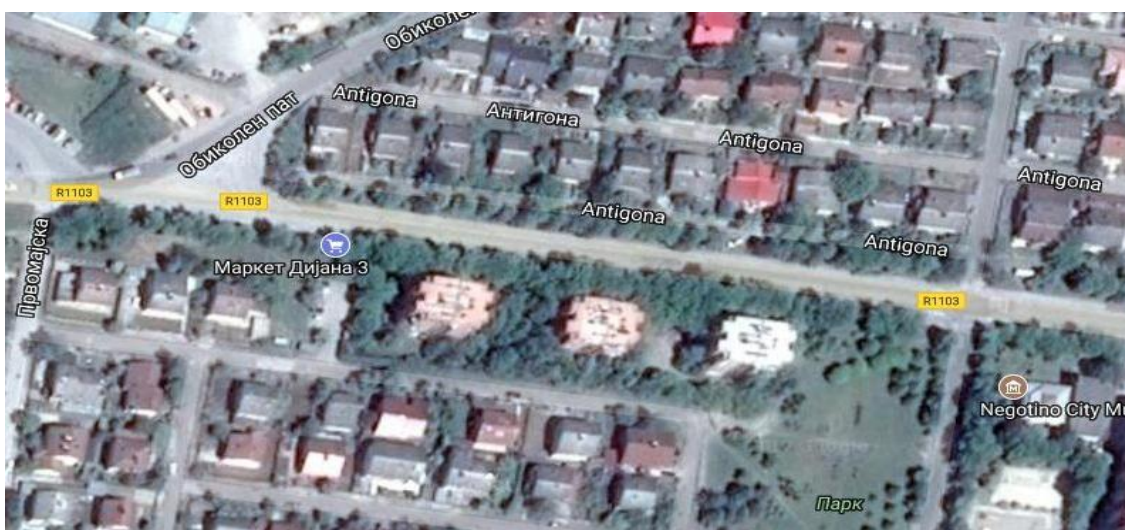




Picture 7: Envisaged Location for construction of the Jardinières eastern entrance of Negotino town Satellite picture



Picture 8 Envisaged Location for construction of the Jardinières plantations western entrance of Negotino town





*Picture 9: Envisaged Location for construction of the Jardinières western entrance of Negotino town Satellite picture*

*Picture 10: Zelkova Kuca Negotino south side*



*Picture 11: Zelkovakuca Negotino (Basement section for wine archive)*



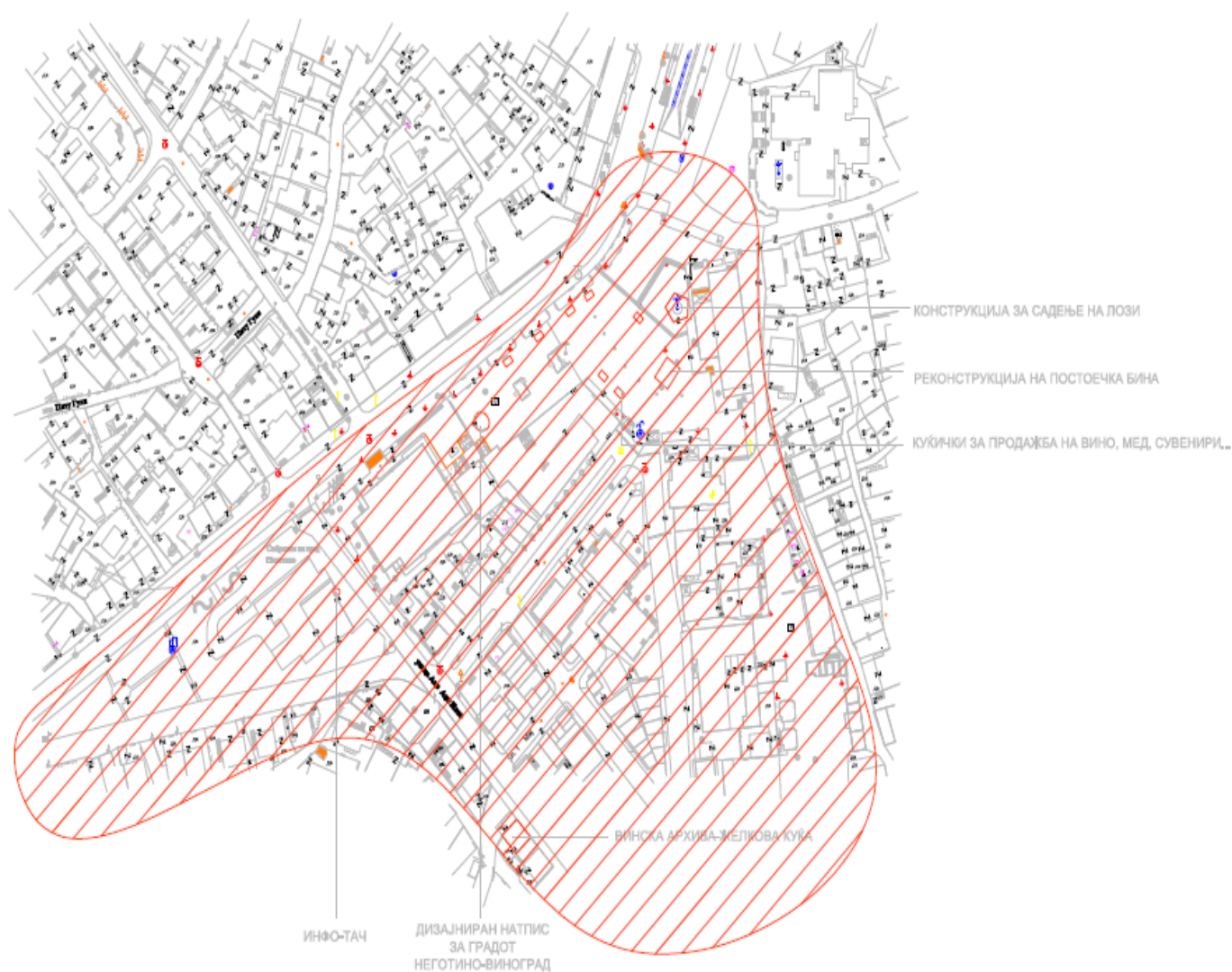


*Picture 12: Yard of Municipality of Negotino building-location for Info Touch point*



*Picture 13: Site map where activities are planned*





*Picture 14: Map of locations where activities are planned in the central city area*

## ANNEXES

EMP Checklist Annex 1: Site information (*figures from the site*)

EMP Checklist Annex 2: Includes the capacity building information

\* *Project management includes a) investor and b) the contractor; i.e. the persons responsible for ordering and implementing the works encompassed by the EMP Checklist*

\*\* *The Contractor Supervision is done on two levels as well: a) state or county inspectorate with their regular mandate to supervise all construction works and b) supervising engineer, in charge for the particular site. Supervising engineer can be a licensed person (for larger works) or a person authorized by the investor to carry out the supervision, i.e. someone who is checking that the construction / rehabilitation is being done according to the design and is reporting to the investor. This is usually also the person who also supervises the implementation of EMP Checklist and provides compliance reports.*

Legal Applicant Representative: Toni Delkov -Mayor

Signature:

Date: 16.12.2018

